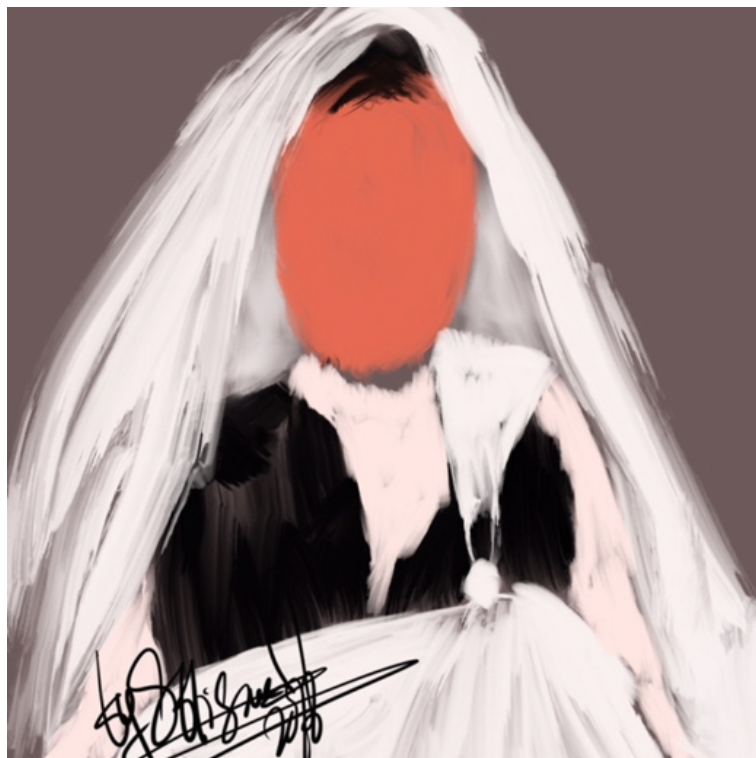


delirium vs dementia

Dr. Ebtisam Elghblawi

Confused, fearful and frail
Can't concentrate can't recognize
Life on a bleak
Hard to dialogue
Struggle to communicate
Difficult to concentrate
Interruptions and distractions
Imposing and restricting
Invading personal space
Seeing through others eyes
Healing the deeply triggered emotions
Watchful with tears in eyes
I am sorry I wiped down
Unexpectedly experience
Ending the momentous
Deteriorating and dying
For good and bad
Reversed image
Mirroring our life paths
All walks of life
No day lasts forever
Reflecting can be cathartic



DOI: 10.5742/MEJN2021.9378014